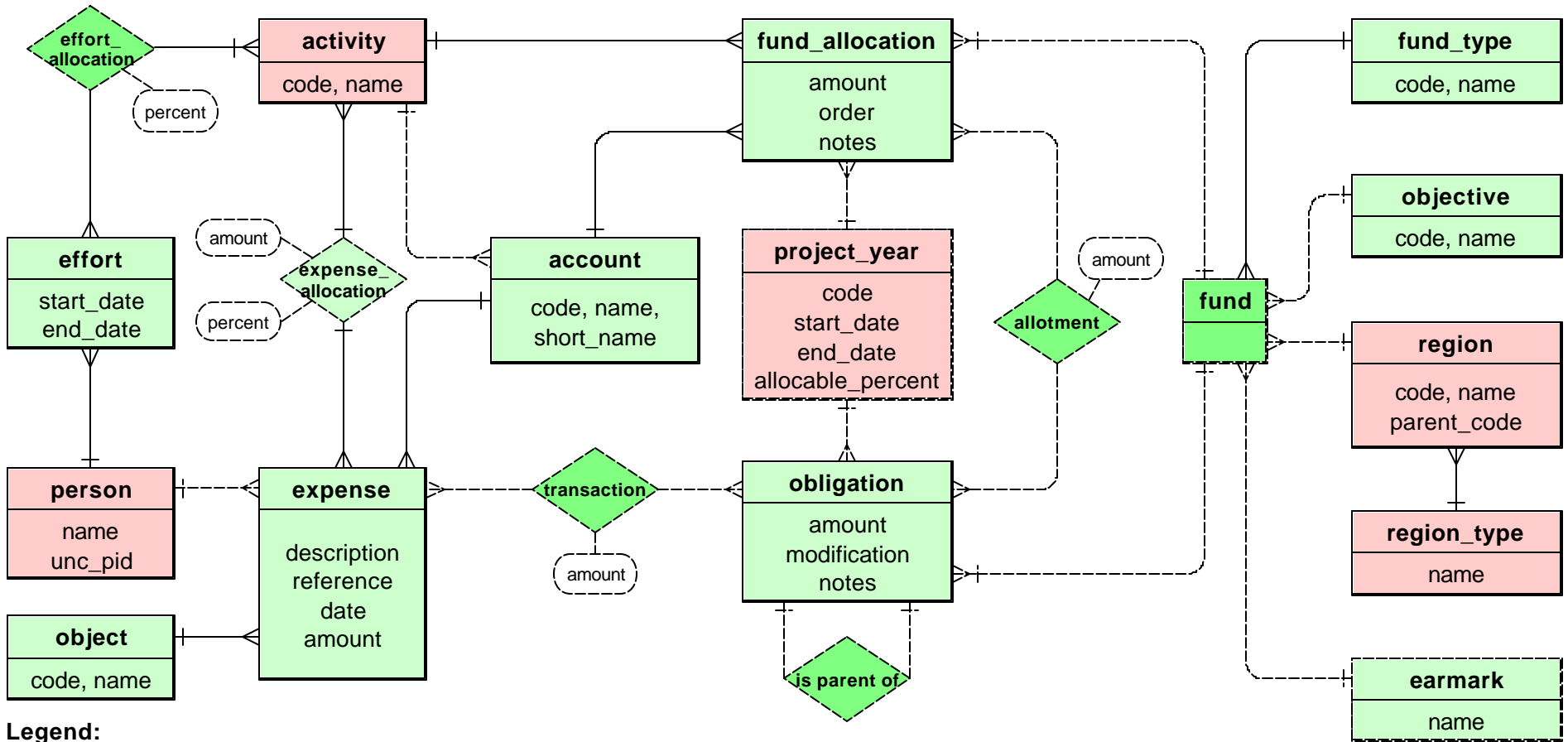


MEASURE Evaluation Phase II
Financial Information System
Entity Relationship Diagram



Legend:

- light and dark green entities are fiscal only
- pink entities have non-fiscal purposes
- dark green entities are dynamically generated
- "many" line endings are optional
- "one or many" line endings are mandatory
- "one" line endings are mandatory
- "one" line endings on a dashed line are optional